

# StriveTogether<sup>®</sup>

Every child. Cradle to career.



impacting  
**13 million students**

## GIVING EVERY CHILD, EVERY CHANCE

StriveTogether is a national movement with a clear purpose: help every child succeed in school and in life from cradle to career, regardless of race, zip code or circumstance. We refuse to settle for a world where a child's potential is dictated by the conditions in which the child is born. So, we work to break down barriers, change systems and improve outcomes for as many families as possible.

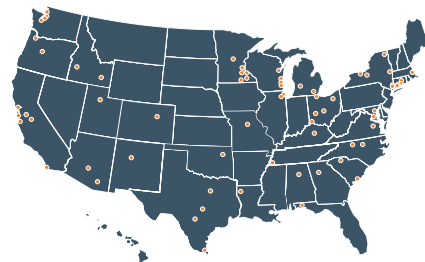
In partnership with 67 communities across the country, we provide resources, best practices and processes to give every child, every chance for success.

A national movement to improve outcomes for every child from cradle to career

67

### COMMUNITY PARTNERSHIPS

building local infrastructure to improve outcomes for every child



\*\*\*\*\*  
\*\*\*\*\*  
\*\*\*\*\*  
\*\*\*\*\*  
\*\*\*\*\*  
**29 STATES**  
+ DISTRICT OF COLUMBIA



Business



Civic



Community-based Organizations



Early Childhood



Health



Higher Education



Housing



Human Services



Investors



K-12



Law Enforcement



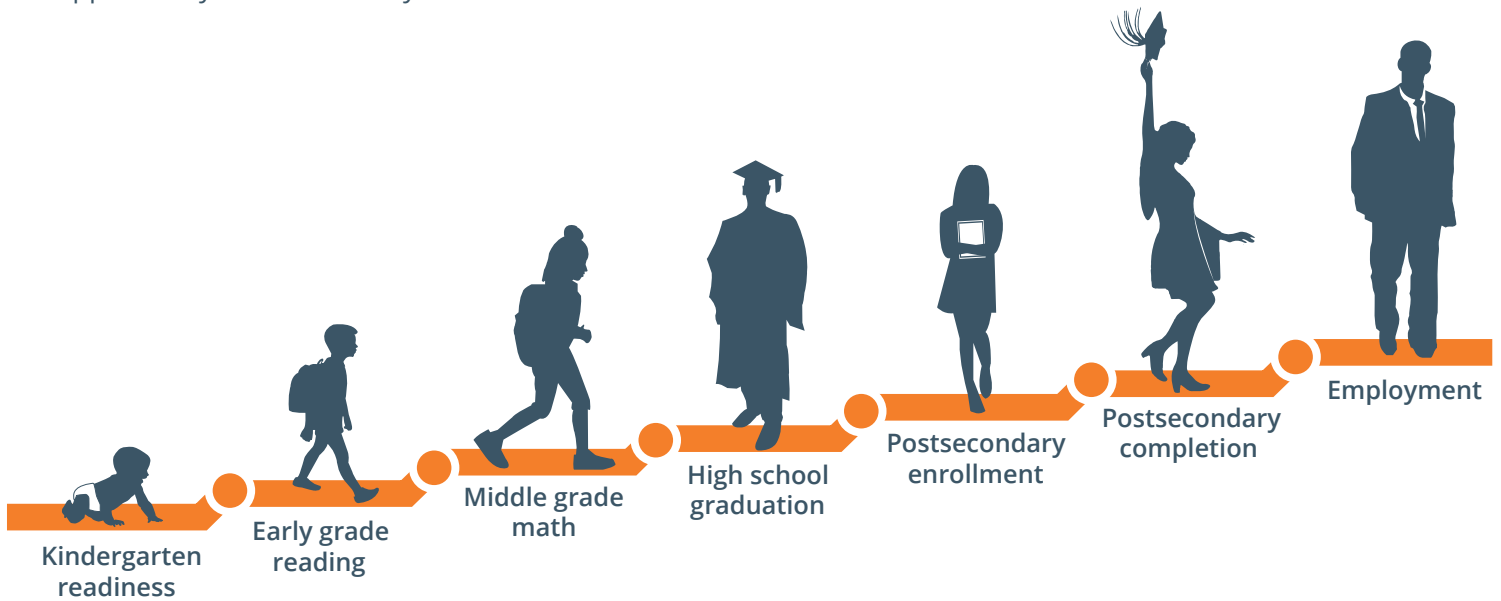
Transportation

## STRIVETOGETHER'S ROADMAP TO SUCCESS

### Improving Outcomes, From Cradle to Career

Education is a lifelong experience that begins well before a child ever sets foot in a classroom and continues long past a cap-and-gown commencement. These outcomes are supported by research as key contributors to

the achievement of cradle-to-career success, and are regularly reported by each community partnership in the Network to ensure accountability and alignment of community resources.



Shared Community Vision



Evidence-based Decision Making



Collaborative Action



Investment and Sustainability

### QUALITY COLLECTIVE IMPACT APPROACH

Lessons learned from community partnerships have shaped a data-driven approach to collective impact that is building momentum and success stories across the country. Connected by the work on the ground, StriveTogether Cradle to Career Network members are committed to sharing knowledge, building upon what works and driving action to improve key outcomes along every child's path to education success.

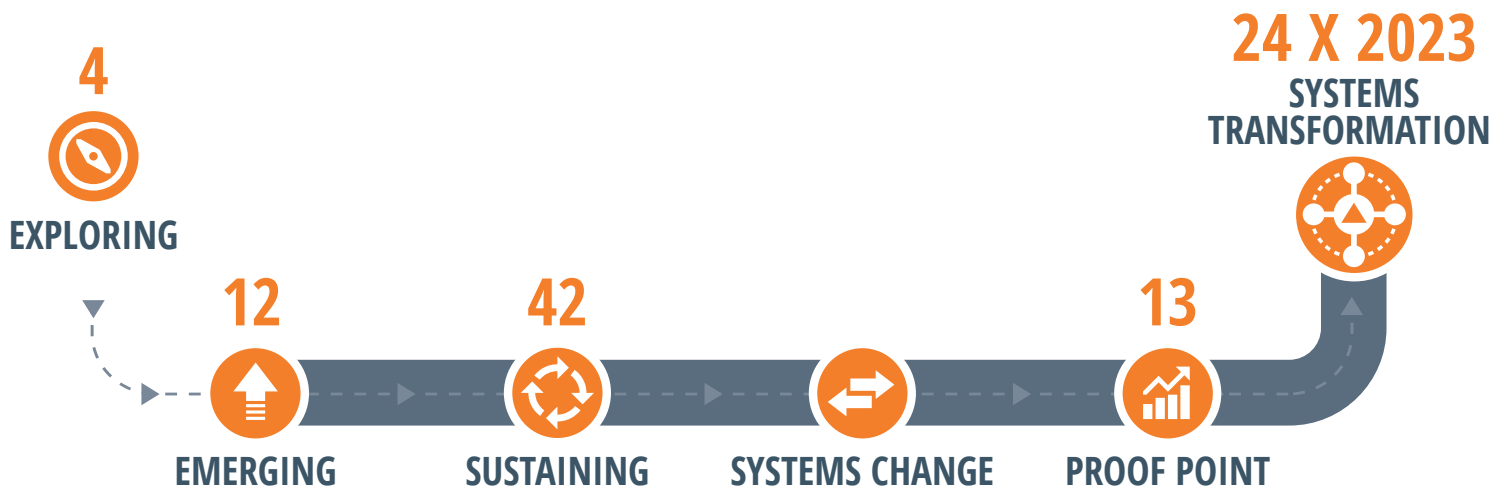
# COMMUNITIES ON THE PATH TO TRANSFORMING SYSTEMS

## Through the StriveTogether Theory of Action™

The StriveTogether Theory of Action™ offers a quality collective impact approach to support communities as they develop and sustain cradle-to-career civic infrastructure. Each community is committed to four key principles across their work:

- Engage the community
- Advance equity
- Develop a culture of continuous improvement
- Leverage existing resources

With these principles in mind, community partnerships are able to chart the path through the theory of action from the early stages of formation through systems transformation. Partnerships that have embraced this quality approach are building civic infrastructure to change systems for sustainable impact on student outcomes.



# of community partnerships in each gateway according to the StriveTogether Theory of Action™

# StriveTogether® NETWORK MEMBERS

Every child. Cradle to career.

## ALABAMA

**Bold Goals Coalition** (Sustaining)  
Birmingham, AL

## ARIZONA

**Cradle to Career Partnership**  
(Sustaining)  
Tucson, AZ

**Thriving Together** (Sustaining)  
Phoenix, AZ

## CALIFORNIA

**Bright Futures Education  
Partnership for Monterey  
County** (Sustaining)  
Monterey County, CA

**Equity Project**  
(Sustaining)  
San Diego, CA

**Fresno Cradle to Career**  
(Sustaining)  
Fresno County, CA

**Marin Promise Partnership**  
(Sustaining)  
Marin County, CA

**Mission Promise Neighborhood**  
(Emerging)  
San Francisco, CA

**Stanislaus Cradle to Career  
Partnership** (Emerging)  
Stanislaus County, CA

## COLORADO

**Youth Initiative of Adams County**  
(Sustaining)  
Adams County, CO

## CONNECTICUT

**Bridge to Success Community  
Partnership** (Sustaining)  
Waterbury, CT

**Bridgeport Prospers** (Sustaining)  
Bridgeport, CT

**Norwalk ACTS** (Sustaining)  
Norwalk, CT

**Stamford Cradle to Career**  
(Sustaining)  
Stamford, CT

## FLORIDA

**Achieve Escambia** (Sustaining)  
Escambia County, FL

## GEORGIA

**Learn4Life** (Sustaining)  
Atlanta, GA

## IDAHO

**imPACT East Idaho** (Sustaining)  
Boise, ID

**RISE: Treasure Valley's Education  
Partnership** (Sustaining)  
Boise, ID

## ILLINOIS

**Success of All Youth** (Emerging)  
Oak Park/River Forest, IL

**Thrive Chicago** (Sustaining)  
Chicago, IL

## KENTUCKY

**Partners for Education**  
(Sustaining)  
Berea, KY

**StrivePartnership** (Proof Point)  
Cincinnati, OH; Newport &  
Covington, KY

## LOUISIANA

**Step Forward** (Emerging)  
Shreveport, LA

## MARYLAND

**Baltimore's Promise** (Sustaining)  
Baltimore, MD

## MASSACHUSETTS

**Boston Opportunity Agenda**  
(Sustaining)  
Boston, MA

## MICHIGAN

**KConnect** (Sustaining)  
Grand Rapids, MI

**Lenawee Cradle to Career**  
(Emerging)  
Lenawee County, MI

## MINNESOTA

**Austin Aspires** (Emerging)  
Austin, MN

**Cradle to Career** (Emerging)  
Rochester, MN

**Every Hand Joined** (Sustaining)  
Red Wing, MN

**Generation Next** (Sustaining)  
Minneapolis & St. Paul, MN

**Northfield Promise** (Sustaining)  
Northfield, MN

**Partner for Student Success**  
(Emerging)  
St. Cloud, MN

## MISSOURI

**Cradle to Career Alliance**  
(Emerging)  
Columbia, MO

## NEW MEXICO

**Mission: Graduate** (Sustaining)  
Albuquerque, NM

## NEW YORK

**The Albany Promise** (Sustaining)  
Albany, NY

**Geneva 2020** (Sustaining)  
Geneva, NY

**Harlem Renaissance Education  
Pipeline** (Emerging)  
New York City, NY

**ROC the Future** (Sustaining)  
Rochester, NY

**South Bronx Rising Together**  
(Sustaining)  
Morrisania, NY

## NORTH CAROLINA

**Alamance Achieves** (Sustaining)  
Alamance County, NC

**The Forsyth Promise** (Sustaining)  
Winston-Salem, NC

## OHIO

**Aspire** (Sustaining)  
Toledo, OH

**FutureReady Columbus**  
(Emerging)  
Columbus, OH

**Learn to Earn Dayton** (Proof  
Point)  
Montgomery County, OH

**StrivePartnership** (Proof Point)  
Cincinnati, OH; Newport &  
Covington, KY

**Summit Education Initiative**  
(Sustaining)  
Summit County, OH

## OKLAHOMA

**ImpactTulsa** (Sustaining)  
Tulsa, OK

## OREGON

**All Hands Raised** (Proof Point)  
Multnomah County, OR

**Better Together Central Oregon**  
(Sustaining)  
Redmond, OR

## SOUTH CAROLINA

**Spartanburg Academic  
Movement** (Proof Point)  
Spartanburg County, SC

**Tri-County Cradle to Career  
Collaborative** (Sustaining)  
Charleston, SC

## TENNESSEE

**Seeding Success** (Proof Point)  
Memphis, TN

## TEXAS

**The Commit Partnership**  
(Proof Point)  
Dallas County, TX

**E3 Alliance** (Proof Point)  
Austin, TX

**UP Partnership** (Sustaining)  
Bexar County, TX

**RVG Focus** (Emerging)  
Harlingen, TX

## UTAH

**Promise Partnership of Salt Lake**  
(Proof Point)  
Salt Lake City, UT

## VIRGINIA

**Bridging Richmond** (Sustaining)  
Richmond, VA

## WASHINGTON

**Eastside Pathways** (Sustaining)  
Bellevue, WA

**Graduate Strong** (Emerging)  
Kitsap County, WA

**Graduate Tacoma** (Proof Point)  
Tacoma, WA

**The Road Map Project**  
(Proof Point)  
South Seattle, WA

## WISCONSIN

**Achieve Brown County**  
(Sustaining)  
Green Bay, WI

**Building Our Future** (Sustaining)  
Kenosha, WI

**Higher Expectations for Racine  
County** (Proof Point)  
Racine, WI

**Milwaukee Succeeds** (Sustaining)  
Milwaukee, WI

## DISTRICT OF COLUMBIA

**Raise DC** (Sustaining)  
Washington, D.C.

---

## StriveTogether

125 East Ninth Street  
Second Floor  
Cincinnati, OH 45202

513.929.1150

@strivetogogether

---

© 2019 StriveTogether  
all rights reserved. Revised 9/2019