

## their future. our mission.

StriveTogether is a national movement with a clear purpose: help every child succeed in school and in life, cradle to career, regardless of race, ethnicity, zip code or circumstance.

Since launching nationally in 2010, StriveTogether has learned a great deal about what it takes for communities to improve outcomes for children at scale. Our nationally recognized approach supports communities in collecting and using local data to illuminate obstacles facing children of color and those living in poverty.

Community partners use these findings to make decisions in real time to improve and properly scale practices and target resources to support what works. In short, data gives StriveTogether communities the insight and information to make smarter investments in the success of every child, from cradle to career.

## cradle to career network

The StriveTogether Cradle to Career Network shows us what is possible when we work together. StriveTogether convenes cradle-to-career partnerships to ensure the success of every child — ensuring local initiatives have impact and maintain momentum. The people involved include school staff; local nonprofit, business and faith leaders; investors; other professionals in the field; and students along with their families.

StriveTogether supports these groups using proven methods that have worked in similar communities. As a team, our impact reflects our shared motivation to create lasting change. We work upstream to dismantle the cycle of inequitable outcomes by re-designing the systems that perpetually fail children and families to instead maximize their opportunity. Starting with kindergarten readiness and extending to health care, housing, public safety and transportation, children must be given the support and resources needed to reach their full potential.

## what we do

StriveTogether helps communities build cradle-to-career infrastructure to support the success of every child.

**CONVENE:** We bring community leaders together to learn from each other.

**COACH:** We coach our network to improve systems and practices.

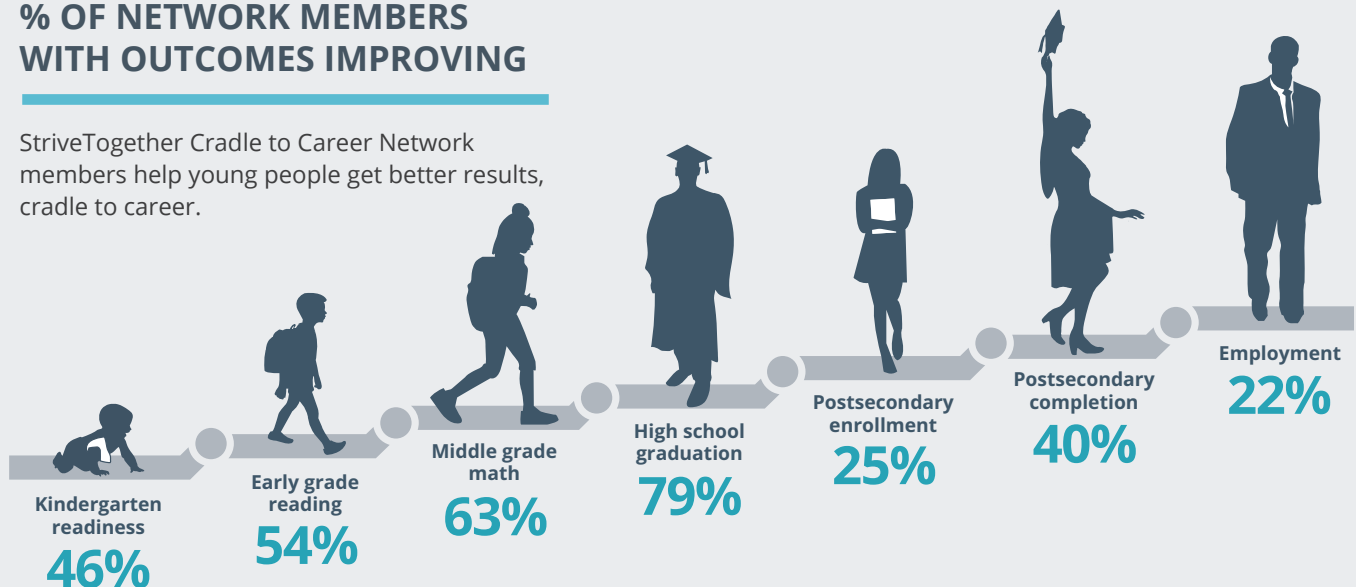
**CODIFY:** We share key learnings to accelerate communities' progress.

**INVEST:** We provide resources to communities to get results.

**INFLUENCE:** We advocate for cradle-to-career work across the country.

## % OF NETWORK MEMBERS WITH OUTCOMES IMPROVING

StriveTogether Cradle to Career Network members help young people get better results, cradle to career.



# StriveTogether Cradle to Career Network



## OUR IMPACT

**14+**  
Million Children

## ONE COMMUNITY AT A TIME

**8+**  
Million Children of Color

**6+**  
Million Children  
Experiencing Poverty

## OUR REACH

**70**  
Cradle-to-Career  
Partnerships

**30**  
States +  
Washington D.C.

© 2022. StriveTogether, Inc. All rights reserved. | 1

© 2022. StriveTogether, Inc. All rights reserved.

Updated 11/2022

## why we do what we do.

### ECONOMIC MOBILITY

StriveTogether and the Cradle to Career Network are committed to increasing economic mobility for children throughout their lives, starting from the moment they are born all the way until graduation and beyond. We support communities to transform the lives of children and families by using tools and approaches that address the root causes of inequities. Improving educational outcomes is crucial to ending the cycle of poverty. Communities that embrace StriveTogether's approach make progress in building civic infrastructure to improve outcomes, eliminate disparities and expand opportunities for every child.

### RACIAL EQUITY

Racial equity is both a value StriveTogether lives and an outcome we must achieve to realize our vision. Leaders must have the courage to disaggregate data to consider race, ethnicity and gender to inform strategies, drive accountability and engage in tough conversations about the systemic racism underpinning the systems we need to transform. A combination of qualitative and quantitative data can be used to highlight inequities to shift mental models, change power dynamics and establish more equitable policies in the community. Partnerships ultimately work to eliminate disparities in achievement and change systems to advance more equitable opportunities.

### SYSTEMS TRANSFORMATION

Better systems for better outcomes have always been at the center of StriveTogether's work. Using data to make decisions and improve practices in real time leads to real results, but in many cases, the right solutions require rebuilding systems instead of trying to fix existing ones. The most vulnerable students are stuck in systems not designed to support them. We must dismantle obstacles and partner with people across sectors to help every child reach their full potential, from cradle to career.

To learn more visit [StriveTogether.org](https://StriveTogether.org) or contact Kelly Anchrum at [anchrumk@strivetogether.org](mailto:anchrumk@strivetogether.org)

**StriveTogether**<sup>®</sup>  
Every child. Cradle to career.